

# Parkheath

*Sold on Service*

---

**Inglewood Road NW6**

**£2,100 PCM (£438 per week) - Camden Band D**



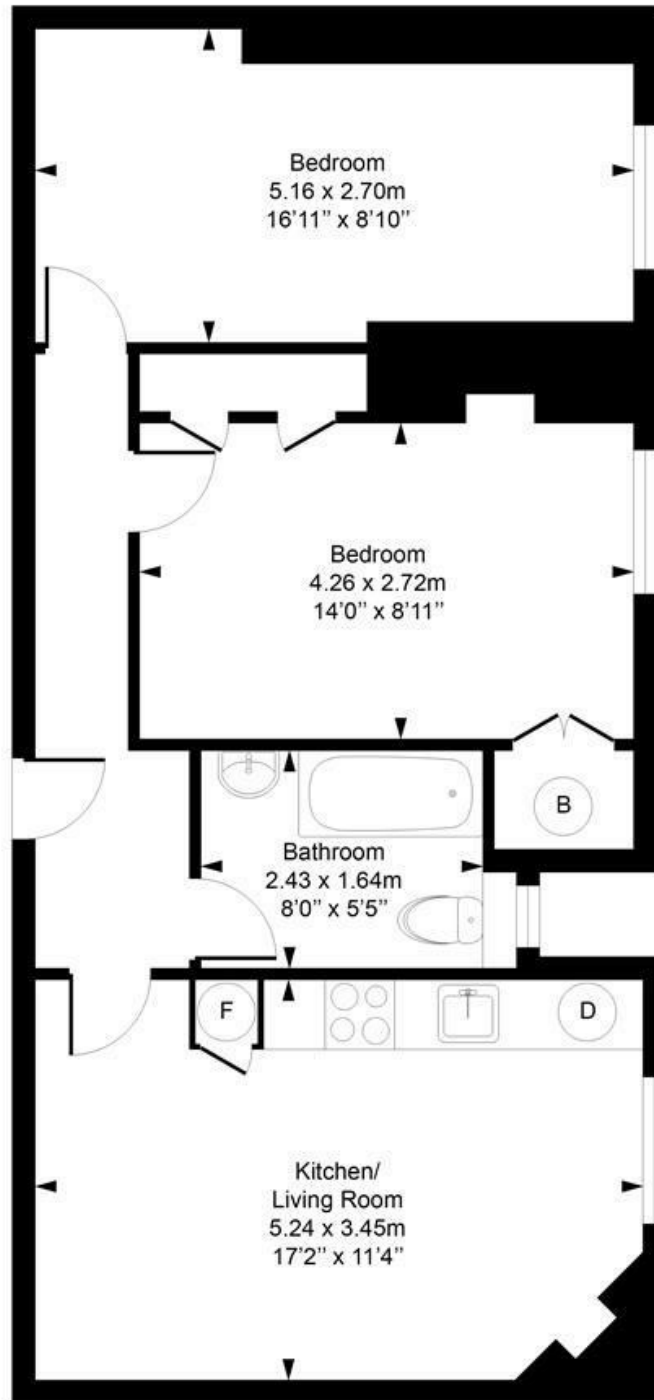
Situated in the heart of West Hampstead  
2nd floor of a sought after Mansion building  
Recently refurbished  
Flexible accommodation  
Modern bathroom

Lovely 1-2 bedroom apartment  
Lift access  
Wooden floors throughout  
Open plan kitchen/living room  
Moments to West End Lane

South Hampstead Office 020 7625 4567  
West Hampstead Office 020 7794 7111

## Welbeck Mansions

Approximate Gross Internal Area = 59.3 Sq m / 638 sq ft



### Second Floor

Measured in accordance with RICS guidelines. Every attempt is made to ensure accuracy

However all measurements are approximate.

The floor plan is illustrative purposes only and is not to scale

ELLIE CLAIRE PHOTOGRAPHY LTD

[www.ellieclairephotography.com](http://www.ellieclairephotography.com)

The particulars do not constitute part of an offer or contract. The particulars, including text, photographs and plans, are for the guidance only of prospective purchasers/tenants and must not be relied upon as statements of fact. The descriptions provided therein represent the opinion of the author and whilst given in good faith should not be construed as statements of fact. Nothing in these particulars shall be deemed a statement that the property is in good condition or otherwise or that any services or facilities are in good working order. All measurements are approximate